



MASTER MHN-FC

MASTER MHN-FC 1000W/740 230V XW

Compact quartz metal halide lamps with double pinch

Product data

• General Characteristics

Cap-Base	Double Ended
Cap-Base Information	Cable
Bulb Finish	Clear
Burning Position	p5 [Parallel +/-5D or Horizontal(HOR)]
Life to 5% failures	7000 hr
Life to 10% failures	8000 hr
Life to 20% failures	9500 hr
Life to 50% failures	12000 hr

• Light Technical Characteristics

Colour Code	740 [CCT of 4000K]
Colour Rendering Index	62 (min), 65 (nom) Ra8
Colour Designation	White
Colour Temperature	4100 K
Colour Temperature Technical	4100 K
Lamp Luminous Flux EM	93000 Lm
Lamp Luminous Efficacy EM	91 Lm/W
Lumen Maintenance 1000h	90 %
Lumen Maintenance 2000h	85 %
Lumen Maintenance 5000h	75 %
Lumen Maintenance 10000h	70 %
Average Luminance EM	2100 cd/cm ²
Chromaticity Coordinate X	374 -

Chromaticity Coordinate Y 366 -

• Electrical Characteristics

Lamp Wattage	1000 W
Lamp Wattage EM 25°C, Nominal	1000.0 W
Lamp Wattage EM 25°C, Rated	1040.0 W
Voltage	230 V
Lamp Voltage	130 V
Lamp Current EM	8.9 A
Dimmable	no

• Environmental Characteristics

Energy Efficiency Label (EEL)	A+
Mercury (Hg) Content	85 mg
Energy consumption kWh/1000h	1144 kWh

• UV-related Characteristics

PET (NIOSH)	0.049 h.klx
Damage Factor D/fc	3.4 -
UV A	807 mW/cm ²
UV B	230 mW/cm ²
UV C	122 mW/cm ²
Specific Eff. Radiant Power	235 mW/klm

• Luminaire Design Requirements

Pinch Temperature	350 (max) C
-------------------	-------------

PHILIPS

MASTER MHN-FC

Bulb Temperature 950 (max) C

• **Product Dimensions**

Base Face to Base Face A 226 mm
 Overall Length C 290 (max) mm
 Diameter D 25.5 (nom), 33 (max) mm
 Light Center Length L 144 mm
 Arc Length O 42.5 mm
 Cable Length X 58 mm

• **Product Data**

Order code 214249 00

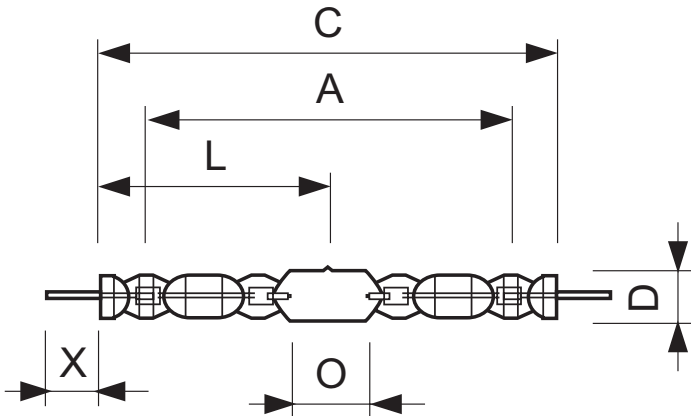
Full product code 871150021424900
 Full product name MASTER MHN-FC 1000W/740 230V XW
 Order product name MASTER MHN-FC 1000W/740 230V XW
 Pieces per pack 1
 Packing configuration 1
 Packs per outerbox 1
 Bar code on pack - EAN1 8718291548256
 Bar code on outerbox - EAN3 8711500214249
 Logistic code(s) - 12NC 928075705130
 ILCOS code MD-1000/40/2B-H-XW
 Net weight per piece 140.000 gr

Warnings and Safety

- Use only in totally enclosed luminaire, even during testing (IEC61167, IEC 62035, IEC60598)
- The luminaire must be able to contain hot lamp parts if the lamp ruptures

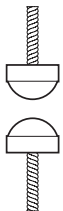
- A lamp breaking is extremely unlikely to have any impact on your health. If a lamp breaks, ventilate the room for 30 minutes and remove the parts, preferably with gloves. Put them in a sealed plastic bag and take it to your local waste facilities for recycling. Do not use a vacuum cleaner.

Dimensional drawing



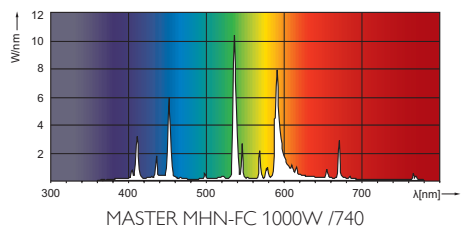
MASTER MHN-FC 1000W/740 230V XW

Product	A (Norm)	C (Max)	D (Norm)	D (Max)	L (Norm)	O (Norm)	X (Norm)
MHN-FC 1000W/740 230V XW	226	290	25.5	33	144	42.5	58



Double Ended

Photometric data



© 2015 Koninklijke Philips N.V. (Royal Philips)
All rights reserved.

Specifications are subject to change without notice. Trademarks are the property of Koninklijke Philips N.V. (Royal Philips) or their respective owners.

www.philips.com/lighting

2015, August 9
data subject to change