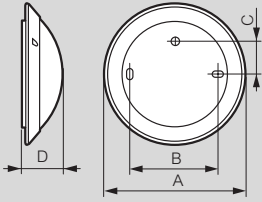


# Bulkhead lights

## Decorative bulkhead lights

For exterior use

Cat.No 0 620 20

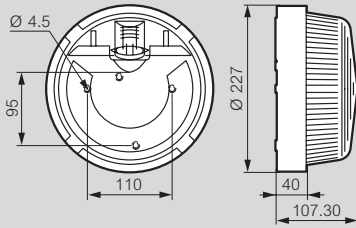


	A	B	C	D
Size 1	296	190	90	95
Size 2	340	240	95	110

## Weatherproof bulkhead lights

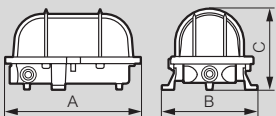
Round - IP 44 - IK 07

Cat.Nos 0 604 50/51/58/59



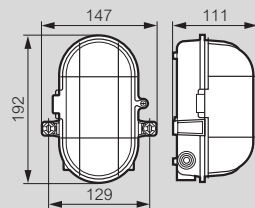
Oval - IP 44 - IK 06

Cat.Nos 0 604 15/16/05/92



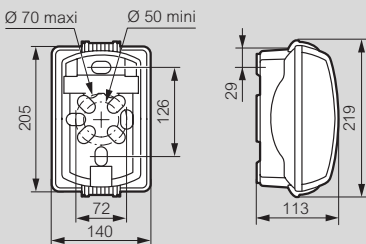
Cat.Nos	A	B	C
0 604 92	178	126	108
0 604 05	178	126	108
0 604 15	169	126	106
0 604 14	175	126	105

Cat.No 0 604 19



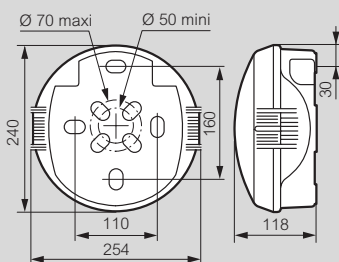
Plexo rectangular - IP 54 - IK 08

Cat.Nos 0 624 00/02



Koro round - IP 54 - IK 08

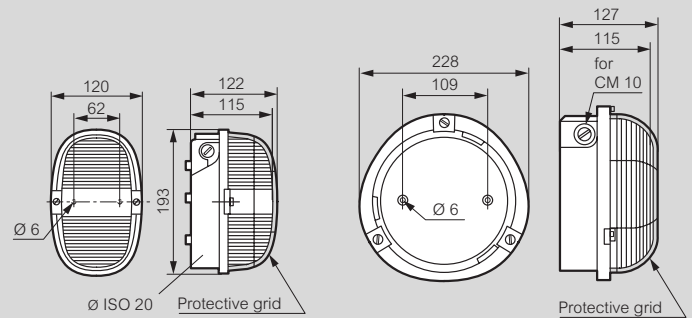
Cat.No 0 624 25



## For tough environment

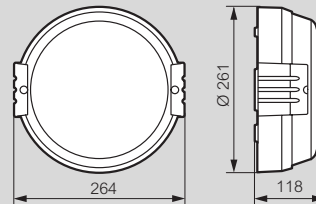
Cat.Nos 0 604 77, 0 605 08

Cat.Nos 0 604 83, 0 605 09

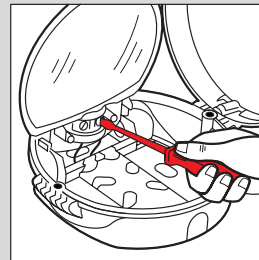


## Vandal - resistant bulkhead lights

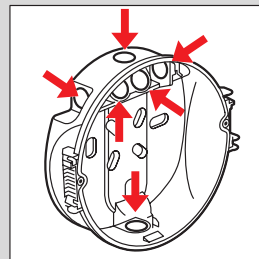
Cat.No 0 624 15



Koro bulkhead lights have multiple access points and can be wired without removing the plate  
A distinct advantage when one finds oneself 3 m from the ground



The articulated plate swivels and enables direct wiring while retaining the option of connection outside the bulkhead lamp



Total accessibility with 6 knock-out cable entries  
Several power supply methods (tube with Plexo end cap Ø20) or DLP mini-trunking 32 x 20 with Plexo adaptor  
Power supply cables way through at the rear, outside of the enclosure