

Philips Hue  
White ambience

Single bulb  
E14



8718696695203



# Light for your moments

From sunrise to sunset

Add a Philips Hue white ambience candle to your Philips Hue system and set your ambience with relaxing warm white to cool bright daylight. Connect it to the Philips Hue bridge or dimmer switch and control it your way.

#### Wake up and go to sleep naturally

- Support your wake-up and go-to-sleep routine with light

#### Create your ambience with warm to cool white light

- Create your ambience with warm white to cool daylight

#### Light recipes for your daily routines

- Relax, read, concentrate and energise with light recipes

#### Smart control, home and away

- Connect to the Philips Hue bridge for smart control

#### Set timers for your convenience

- Set light schedules for easy home automation

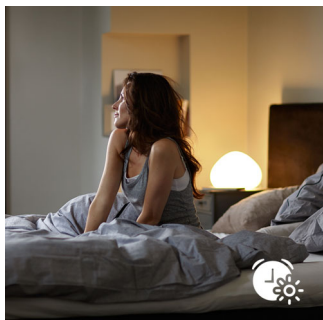
# PHILIPS

White ambience  
Single bulb E14

8718696695203

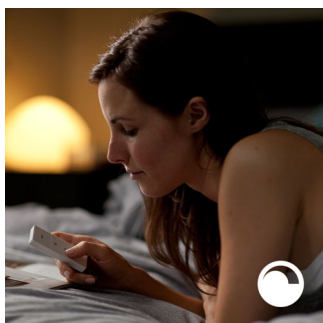
# Highlights

## Sleep and wake up naturally



Twist a Philips Hue candle into your bedside table lamp and it will help you to get out of bed the way you like to. Start your day smoothly with a warm sunrise. The gradually increasing brightness gives you the feeling you are waking up from natural light - rather than the rude awakening of an alarm. In the evening, relaxing warm white light helps you to unwind, relax and fall asleep more comfortably at night.

## Installation-free dimming



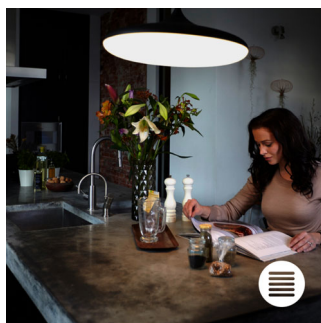
Control your Philips Hue lights directly with the wireless dimmer switch. You can turn the lights on and off, switch between the four different light recipes and dim to the right brightness. Installation is quick, simple and hassle-free. All you have to do is pair the switch with the lamp and place the switch anywhere in your home. It's that easy.

## Create your ambience



Setting the ambience has never been easier with Philips Hue candle bulbs. Choose any shade of white light to set the ambience or decorate your home with a mix of warm and cool white light. You can enjoy different styles throughout the year, whether it's the crisp white light reminding you of a spring breeze, the warm white light of a summer sun or the ice-cool daylight of winter.

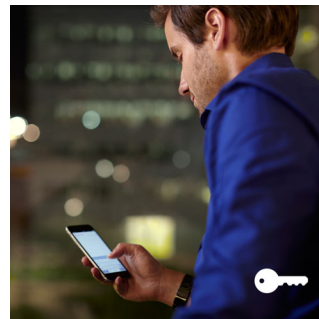
## Light recipes



Light influences our mood and behaviour. Philips Hue can help you to customise your daily routines into moments you can enjoy. Skip your morning coffee and get ready for the day with cool, bright white daylight that helps to energise your body and mind. Stay focused with finely tuned bright white light. Or put

your feet up and relax with a soft glow of white light for the perfect end to the day.

## Set light schedules



Philips Hue can make it seem like you're at home when you're not, using the schedule function in the Philips Hue app. Set the lights to come on at a pre-set time, so the lights are on when you arrive home. You can even set rooms to light up at different times. And of course, you can let the lights turn off gradually in the night, so you never have to worry whether you've left any lights on.

## Smart control, home and away

To control Philips Hue lights with your smart device, a Philips Hue bridge is required. Once connected, you can control your lights with the Philips Hue app from wherever you are. Check whether you forgot to switch your lights off before you left your home, and switch them on if you are working late. It's all about simplifying your life and giving you peace of mind in smart and useful ways. The bridge is included in all Philips Hue starter kits, or you can buy it separately and simply build your own Philips Hue system.

# Specifications

## The bulb

- Fitting: E14
- Form factor: B39
- Lifetime: 25,000 hour(s)
- Colour temperature: 2200 - 6500 K
- Wattage: 6 W
- Input voltage: 220 V-240 V
- Light output: All shades of white
- Software upgradable: when connected to Hue bridge
- Height: 39 mm
- Width: 117 mm
- Max. operation power: 6 W
- Max. standby power: 0.1 W

## What's in the box

- Bridge: No
- Ethernet network cable: No
- Power adapter: No
- Hue bulbs: 1
- Hue dimmer switch: No
- Hue Tap switch: No

## Environmental

- Operational humidity:  $5\% < H < 95\%$  (non-condensing)

## Guarantee

- 2 years



Issue date 2017-03-10

Version: 3.0.1

12 NC: 9290 013 01401

© 2017 Philips Lighting Holding B.V.  
All Rights reserved.

Specifications are subject to change without notice.  
Trademarks are the property of Philips Lighting Holding B.V. or their respective owners.

[www.philips.com](http://www.philips.com)