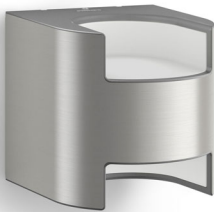




Philips myGarden
Wall light

Grass
inox
LED

myGarden



17321/47/16

Enjoy a beautiful garden with light

This neat and tidy Philips Grass LED outdoor wall light is made of durable stainless steel. The unique cutaway cube design lights up your wall from top to bottom with two brilliant beams of warm white light.

Designed for your garden

- IP44 - weather proof

Sustainable light solutions

- High quality LED light
- Energy saving
- Warm white light
- Long operating life up to 25 years

PHILIPS

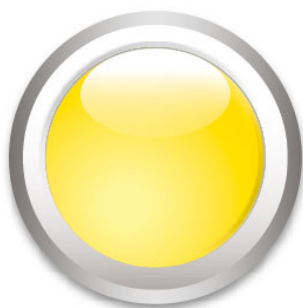
Highlights

High quality LED light



The LED technology, integrated into this Philips lamp, is a uniquely developed solution by Philips. While instantly turned on, it enables an optimal light output and brings out vivid colors in your home.

Warm white light



Light can have different color temperatures, indicated in units called Kelvin (K). Lamps with a low Kelvin value produce a warm, more cosy light, while those with a higher Kelvin value produce a cool, more energising light. This Philips lamp offers warm white light for a cosy atmosphere.

Energy saving



This Philips energy saving lamp conserves energy compared to traditional light sources, helping you to

save money on your electricity bills and do your bit for the environment.

IP44 - weather proof



This Philips outdoor light is especially designed for humid outdoor environments. It was tested rigorously to ensure its water resistance. The IP level is described by two figures: the first one refers to the protection level against dust, the second against water. This outdoor light is designed with IP44: it is protected against splashing water, this product is most common and ideal for general outdoor use.

Long operating life



A light source you can trust. The LED bulb, delivered with this Philips LED lamp, will last up to 25.000 hours (which equals 25 years on basis of an average use of 3 hours / day with an amount of at least of 13.000 on/off switching cycles). It feels so comfortable to think that you won't have to worry about maintenance or light bulb replacement while having the perfect light ambiance in your home.

Specifications

Design and finishing

- Material: stainless steel
- Color: inox

Extra feature/accessory incl.

- Weatherproof

Product dimensions & weight

- Height: 12.8 cm
- Length: 12.8 cm
- Width: 14.5 cm
- Net weight: 0.570 kg

Technical specifications

- Mains power: Range 220 V - 240 V, 50-60 Hz
- Bulb technology: LED, Safety Extra Low Voltage
- Number of bulbs: 2
- Wattage bulb included: 4.5 W
- Light color: warm white
- Total lumen output fixture: 800 lm
- Fixture dimmable
- LED
- Lifetime up to: 25,000 hrs
- IP code: IP44, protection against objects bigger than 1 mm, protection from splashed water
- Class of protection: II - double insulated
- Light source equivalent to traditional bulb of: 35 W

Service

- Warranty: 2 year(s)

Packaging dimensions & weight

- Height: 16.1 cm
- Length: 13.6 cm
- Width: 13.6 cm
- Weight: 0.660 kg

Miscellaneous

- Especially designed for: Garden & Patio
- Style: Contemporary
- Type: Wall light



Issue date 2016-03-02

Version: 1.0.1

12 NC: 9150 051 97001
EAN: 87 18696 13160 2

© 2016 Koninklijke Philips N.V.
All Rights reserved.

Specifications are subject to change without notice.
Trademarks are the property of Koninklijke Philips N.V.
or their respective owners.

www.philips.com